

HR15/17 Software Update

Instruction No.: HR15/17_CI01

Product: HR15/17

Operation: Update Software of the HR15/17 (4x4 MK2 & Narrow MK3)

Health & Safety Considerations:



Standard Practices Only

Tools Required: Flat head screw driver, Laptop with IFM Ecomat mobile software installed

Consumables Required: E10070 Version 11

Parts Required: P26303 (LOOM, MACHINE to CANFOX) & P26384 (LEAD, CANFOX to IFM)

Notes/Other References: IFM_Download_001

[Disclaimer](#)

All update activities should be carried out by a competent MEWP service technician adhering to standard health and safety practices.

Only install software from authorised sources and check with your IT department before attempting to install/use these instructions.

Niftylift cannot be held responsible for any damage or losses from incorrect use of these instructions.

Whilst every effort has been made to include all information and details required to facilitate the above mentioned updates should you have any queries contact the Niftylift Service department via service@niftylift.com.

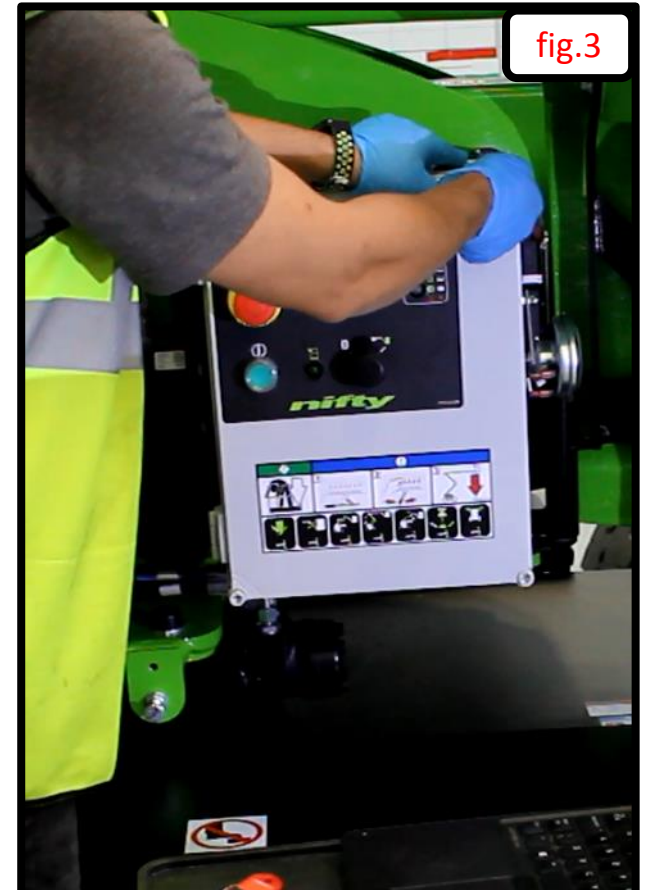
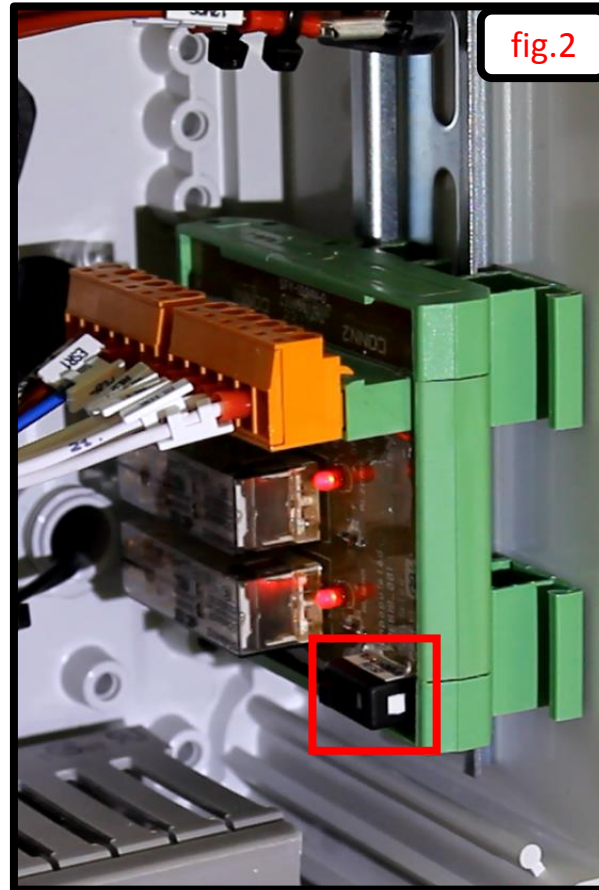
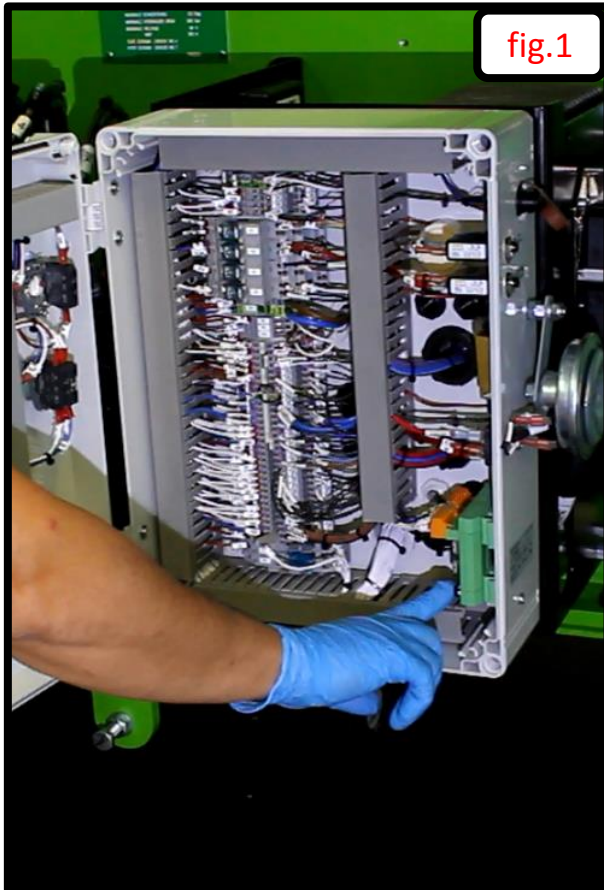
1. Open the base control Box

With the machine power turned off (fig.1) use a flat head screw driver to open the 4 screw securing the base control box lid (fig.2), and let the lid open on its hinge (fig.3).



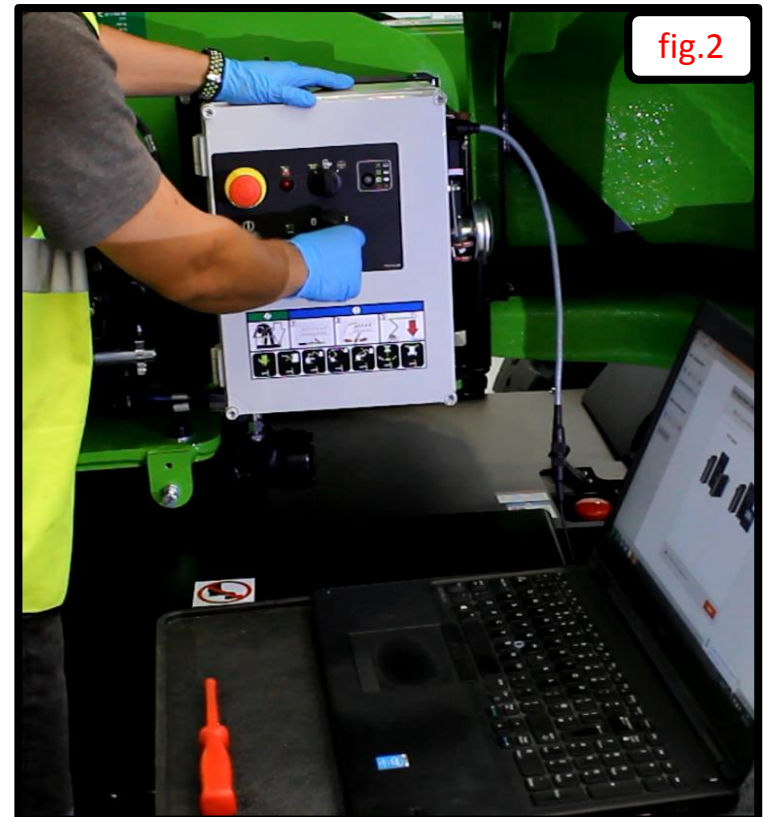
2. Place the machine into download mode

Locate the download mode switch as shown (fig.1), and move the switch into download (fig.2) replace the lid temporarily and secure with the lid screws (fig.3).



3. Connect the laptop to the machine

Using the P26303 “LOOM, MACHINE TO CANFOX” & P26384 “LEAD, CANFOX, IFM” connect the 7 pin Deutsch connector to the machine and USB connector into the laptop (fig.1) then turn on the machine (fig.2).



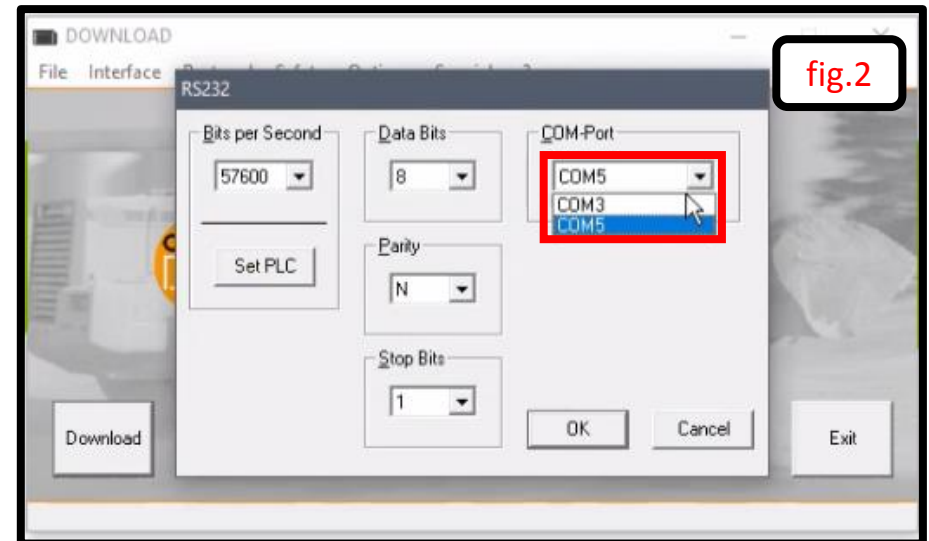
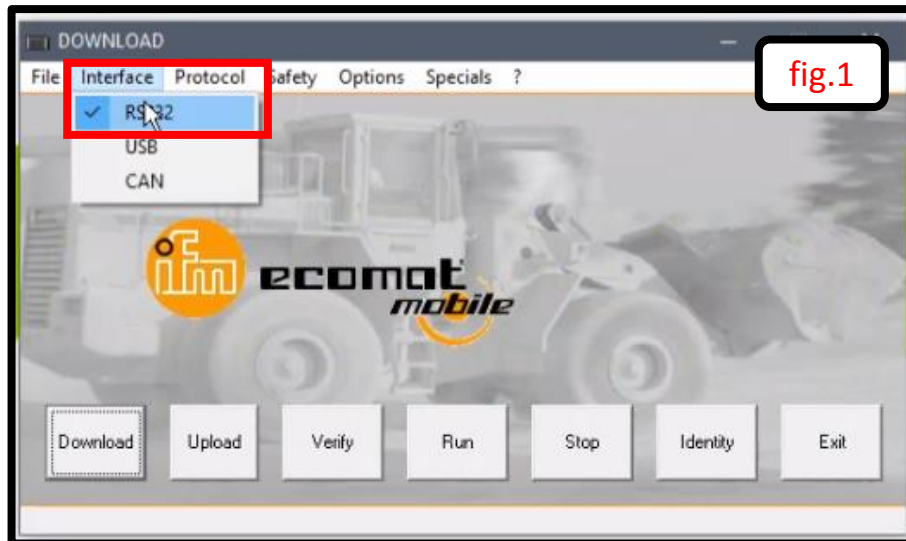
4. Update the machine software

Copy the latest version of E10070 as per the title page to your desktop (fig.1) and Open the IFM Download software as per instruction IFM_Download_001 (fig.2).



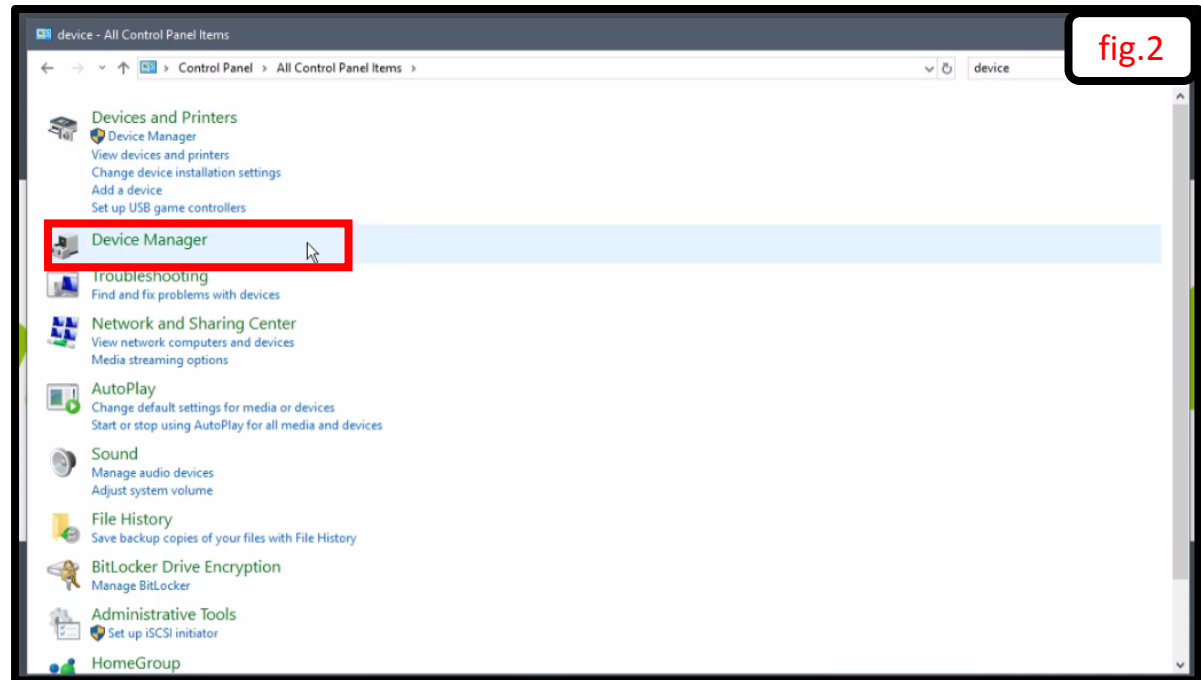
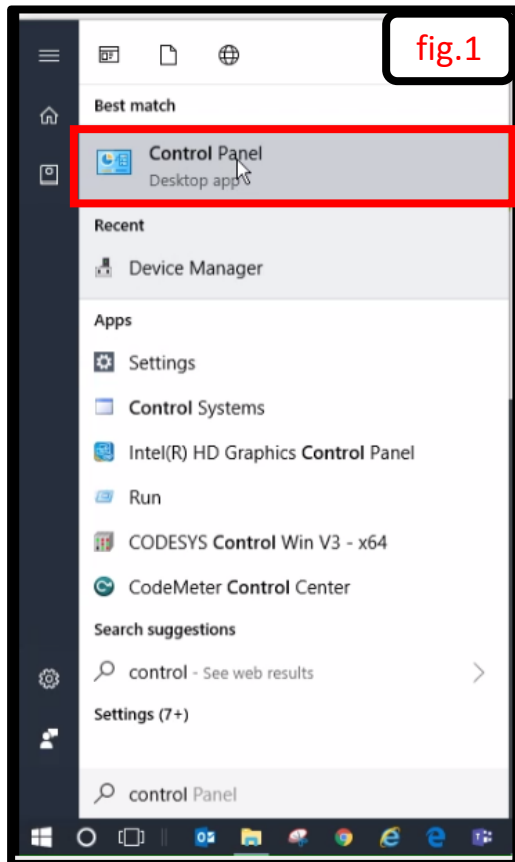
4. Update the machine software continued

With the IFM downloader open select the interface drop down menu and click on RS232 (fig.1) and view which COM ports are available (fig.2).



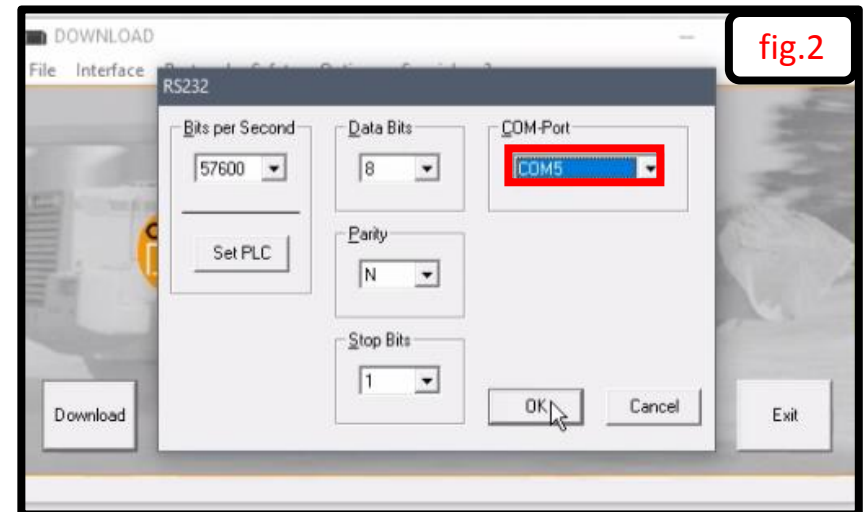
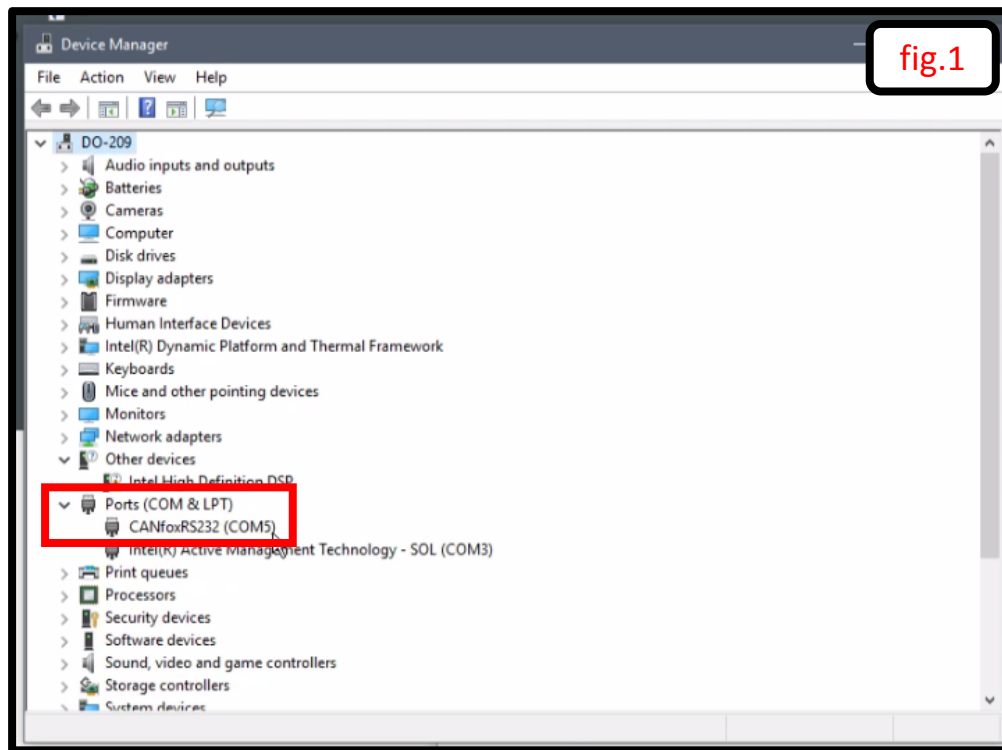
4. Update the machine software continued

To select the correct COM port navigate through the Windows start and open up the Control panel window (fig.1) and select Device manager (fig.2).



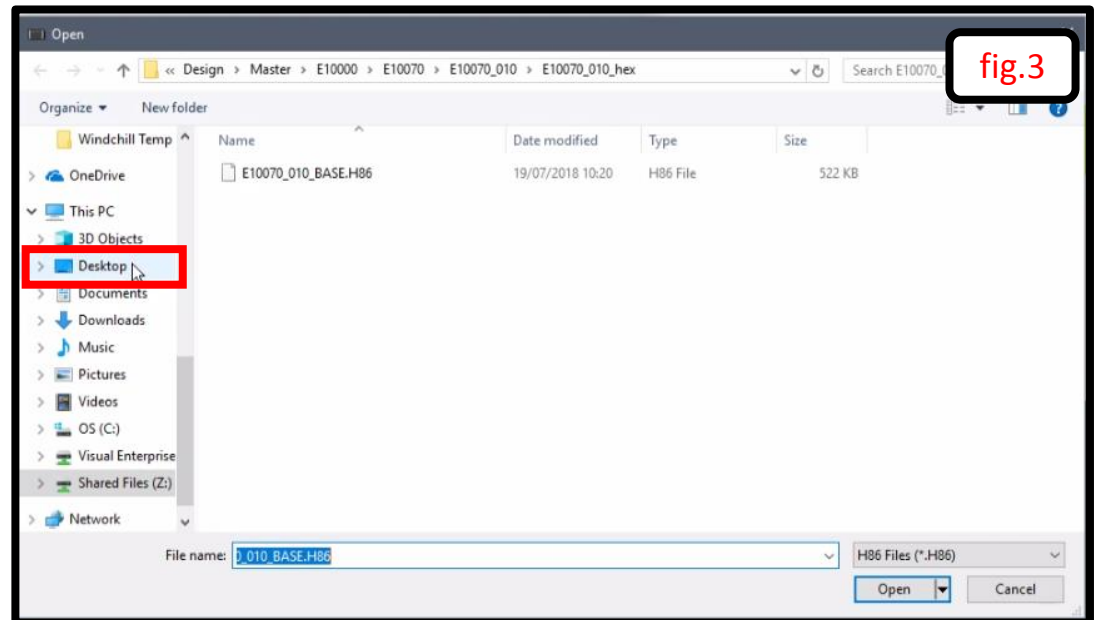
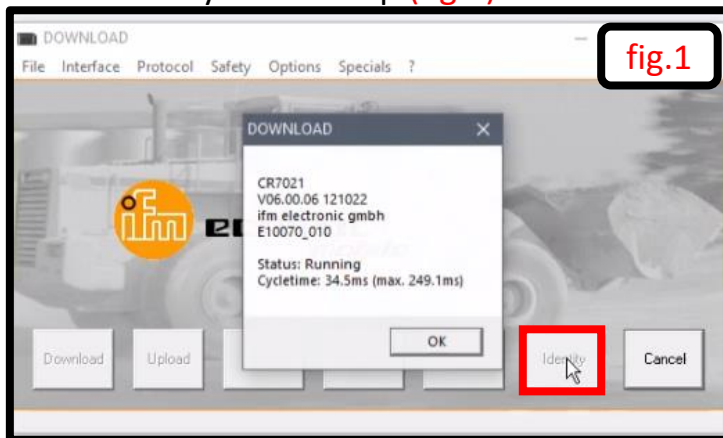
4. Update the machine software continued

In device manager extend the Ports(COM&LPT) menu and identify the COM port number assigned to CANfoxRS232 (fig.1), return to the IFM Downloader window and select the relevant port (fig.2) and click ok.



4. Update the machine software continued

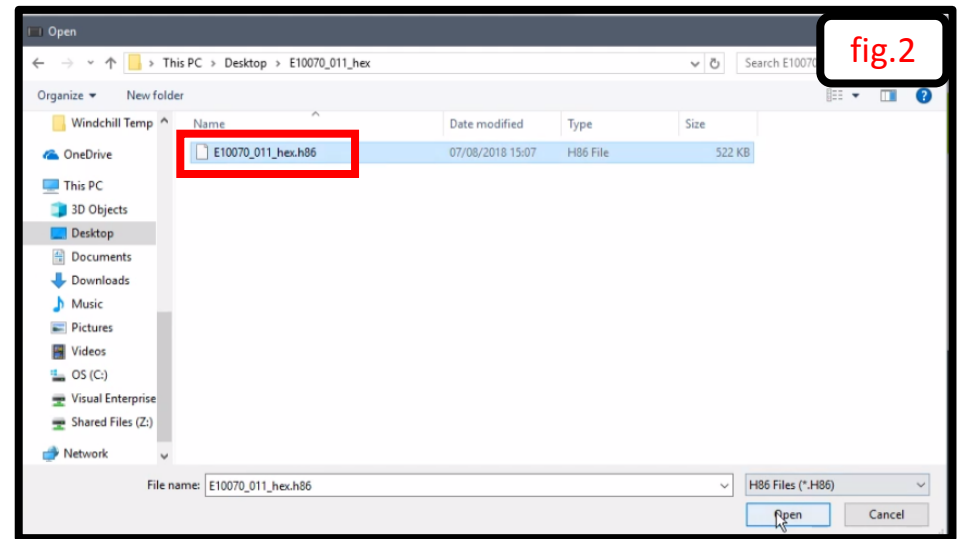
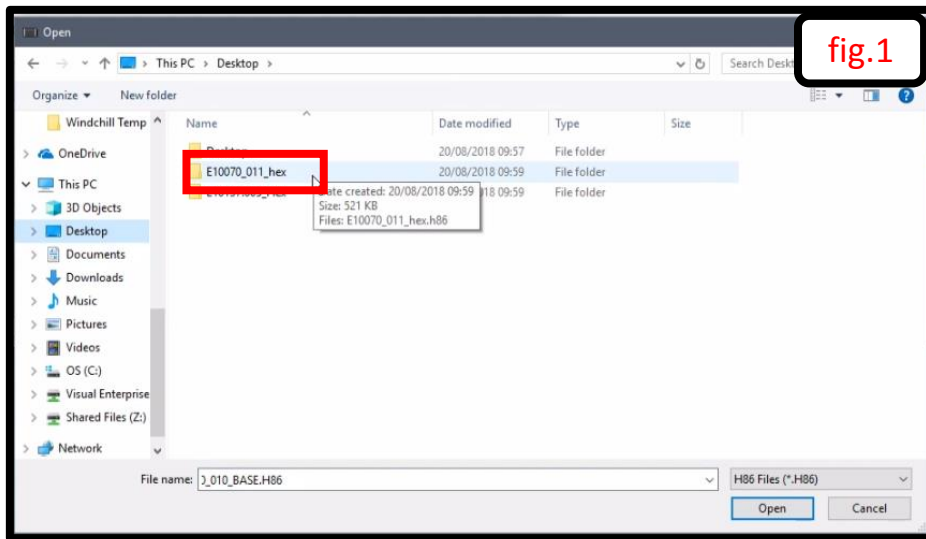
Click the Identify button and this will bring up the machine connected current software version (fig.1) and OK to close the window. Next click Download (fig.2) and new window will open where you can navigate to the new software file located on your desktop (fig.3).



Note:
Ensure correct software number and version is selected as per title page of instruction.
Software numbers shown in this instruction are for demonstrational purposes only.

4. Update the machine software continued

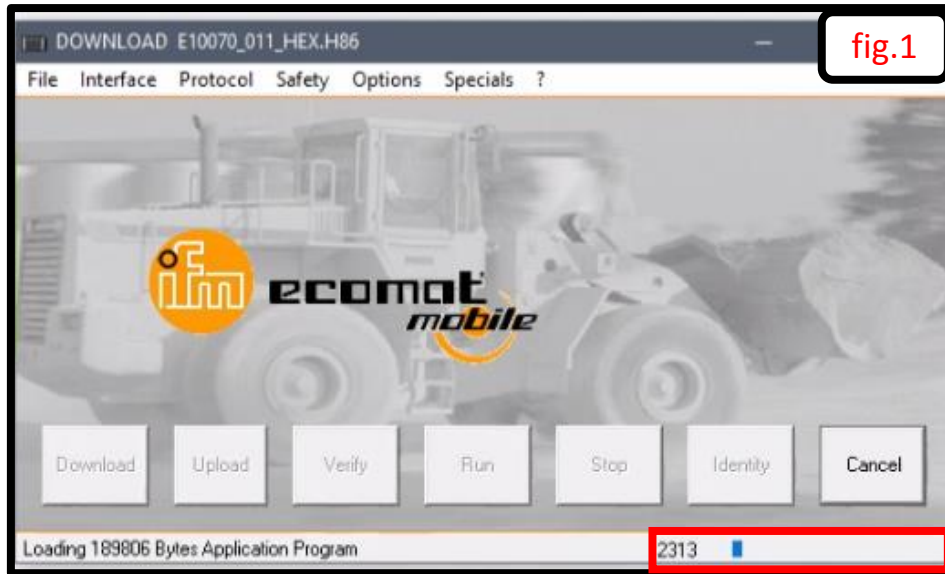
From your desktop select and open the correct software number and version folder (fig.1), within that folder select the “HEX” file by double clicking.



Note:
Ensure correct software number and version is selected as per title page of instruction.
Software numbers shown in this instruction are for demonstrational purposes only.

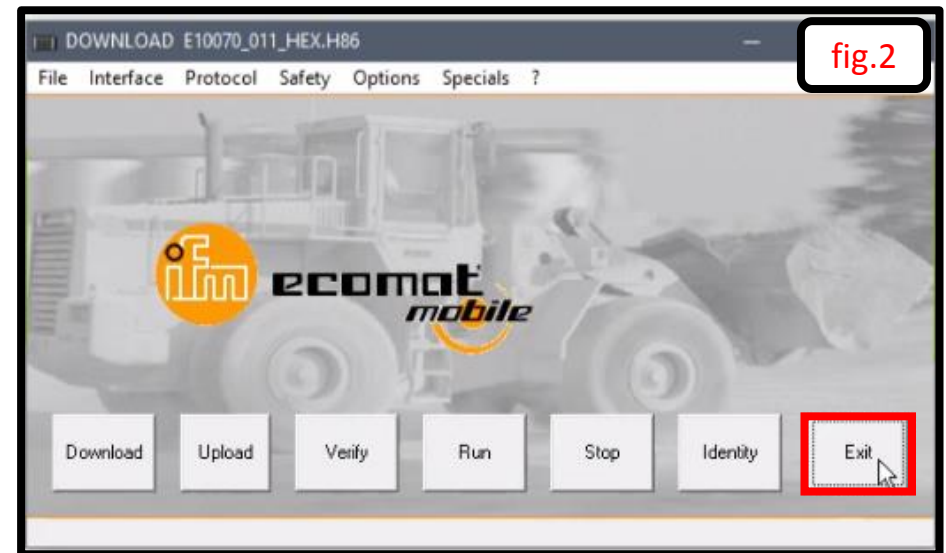
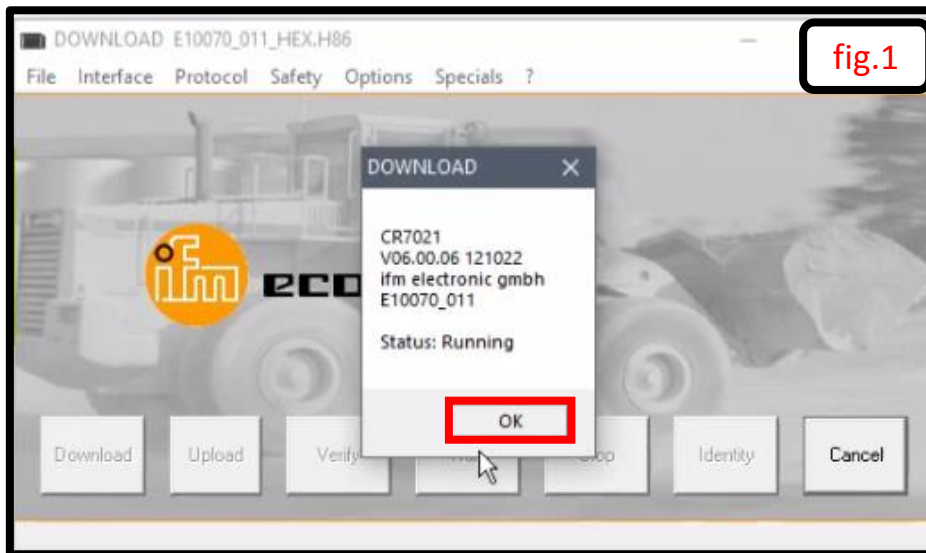
4. Update the machine software continued

The software will start uploading onto the machine and the status can be seen in the bottom right hand corner (fig.1), once complete a window will open for you to click "OK" (fig.2).



4. Update the machine software continued

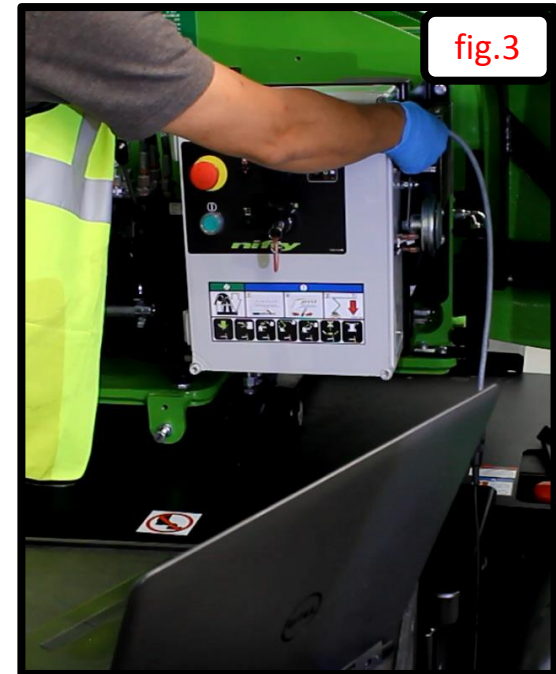
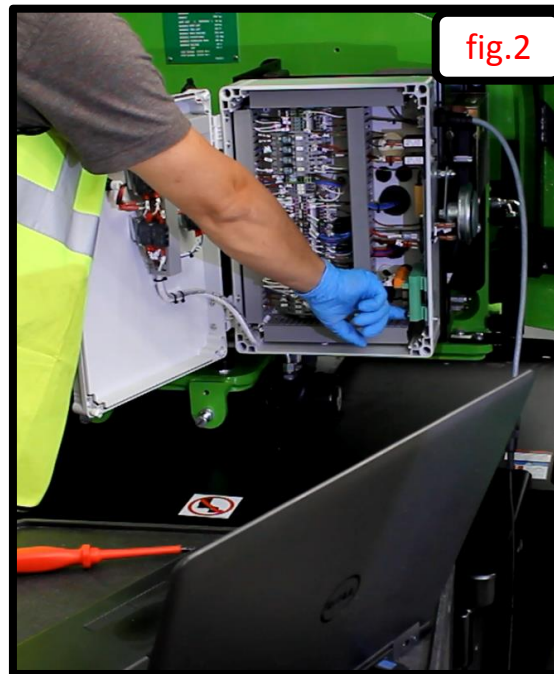
Click the “RUN” button to confirm software revision has been updated and that the status is “Running”. Click “OK” to close the window (fig.1) and “Exit to close the IFM Download program (fig.2).



Note:
Ensure correct software number and version is selected as per title page of instruction.
Software numbers shown in this instruction are for demonstrational purposes only.

5. Disconnect from the machine and secure the control box lid

Turn the machine off (fig.1). Open the control box lid and return the machine from “download” to “run” mode(fig.2). disconnect the CANFOX connector from the machine (fig.3).



6. Secure control box lid and check software version is correct

Secure the console lid with the 4 retaining screw (fig.1) turn on the machine (fig.2) .

After the machine has completed start up navigate using the cage screen to confirm the software version (fig.3).

