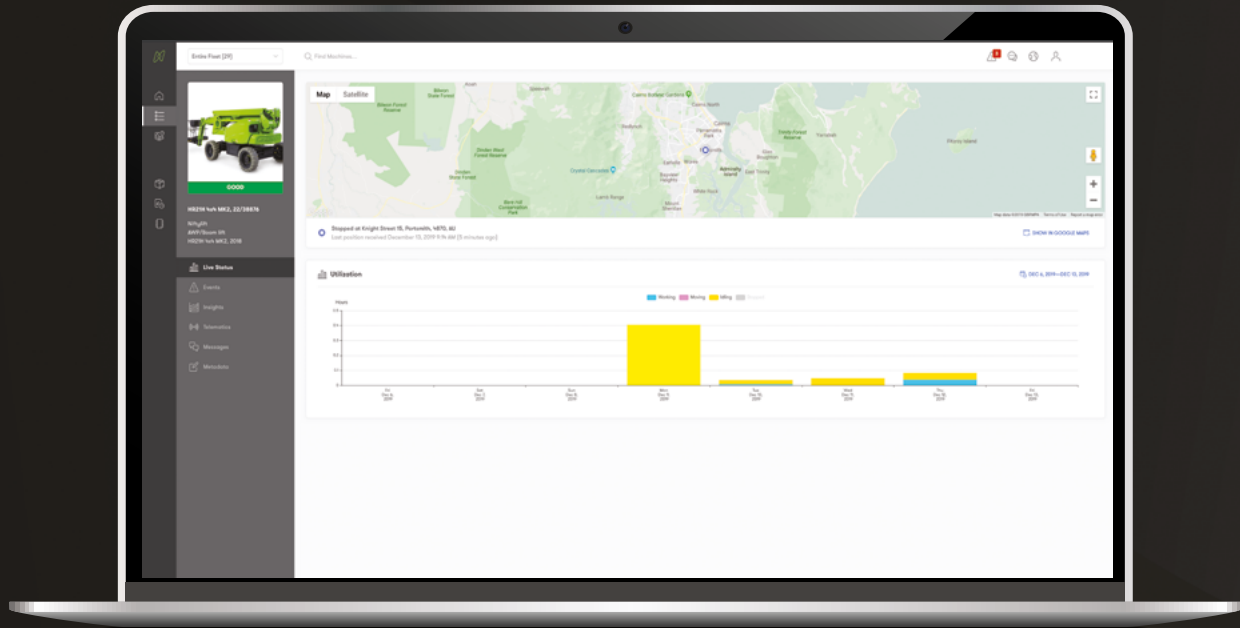


niftylift



Niftylink[®] Manager



The command and control center of your entire fleet

Smart. Connected. Efficient.

Powered by
Trackunit

Introducing Niftylink

Niftylink is Niftylift's powerful telematics tool that provides valuable data insights on your machines' health, activity and location, helping maximize the efficiency of your fleet. Ultimately, improving your bottom line and customer satisfaction.

We have worked closely with construction telematics specialists, Trackunit, to develop this best in class tool, gathering feedback from our customers and our expert team of engineers, to ensure all the features of Niftylink add value to machines in your fleet and the service you provide to your customers.

Contact us now.
Speak to our sales team to discover how Niftylink can maximize the potential, profitability, and efficiency of your fleet.

Call 1-800-NIFTYLIFT
(1-800-643-8954)
or email: usasales@niftylift.com

Niftylink Manager

Niftylink Manager is the command and control center for your entire fleet, providing the tools you need to increase the uptime of your machines and improve the efficiency and profitability of your business processes. With a detailed real-time overview of your fleet, Niftylink Manager is the key to unlocking the potential of your machines.



Niftylink Manager Login

In order to access Niftylink Manager, you will need to be set up as a user by the manager of the account. Once you're set up, you will be given a username and password so you can login to your account.

Login here:
www.niftylinkmanager.com

Niftylink Manager

Fleet Home Improve efficiency.

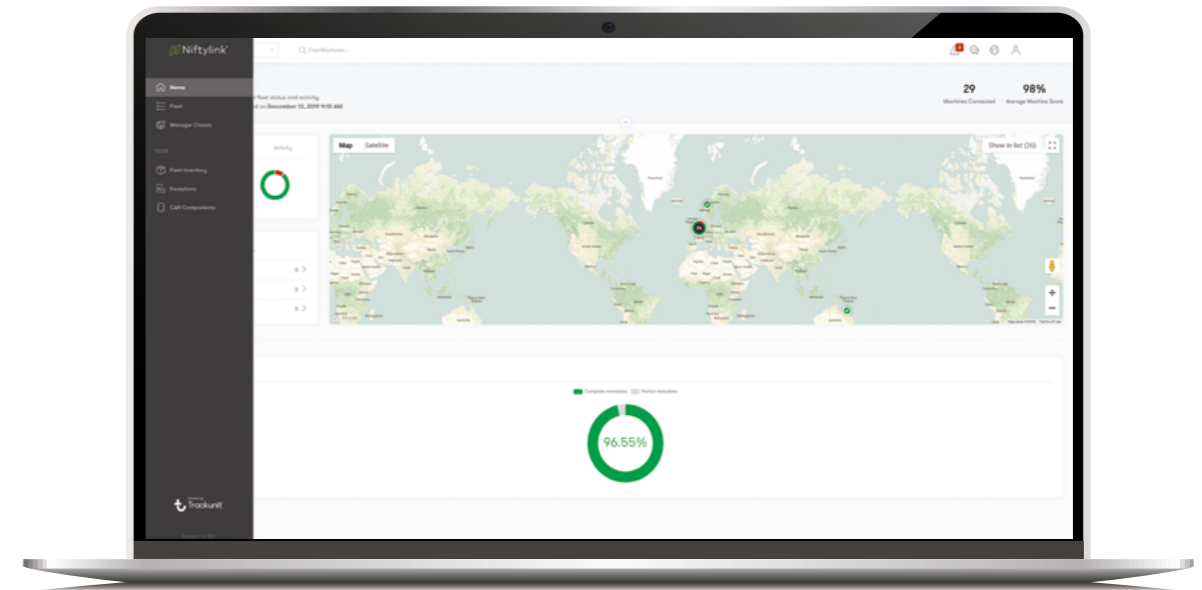
The information home of Niftylink Manager that provides Fleet Managers with insights into the current status, activity and location of all the machines in the fleet. The fleet can be viewed in a list for a more comprehensive overview of information, split by machine model, type and age. Improving efficiency by reducing time spent segmenting machine data.

Attention

Instantly know if any machines require maintenance. The attention list prioritizes critical faults so you can allocate resources accordingly. Providing a preventative measure against potential breakdown risks and associated costs, this feature anticipates problems before they happen, improving site safety.

Activity

Live tracking helps keep a close eye on individual machines in the fleet and measures operating times. Hire companies can prevent machines from working over their agreed hours, saving on operating costs. Eliminate paper processes and provide historical usage insights and trend data for smarter training, making processes faster and more efficient.

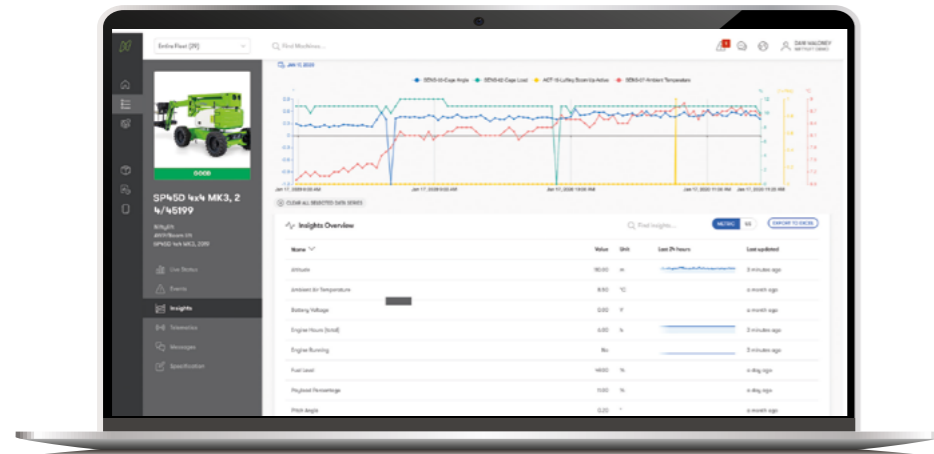


Insights

Individual machine analytics.

Niftylink Insights enables you to delve into advanced machine data to understand how your machines are being used. Utilize data from over 70 parameters (model dependent) being read from the machine CAN bus at least every 2 minutes or view the machine's entire history. Make smarter business decisions that prioritize the efficiency and profitability of individual machines.

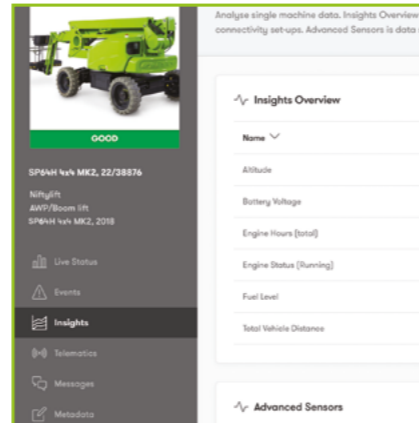
Using the chart function, you can view up to 4 data points on a single graph. Compare innovative insights such as Ambient Air Temperature and Payload Percentage with Advanced Sensors directly from the CAN bus to understand exactly how your machines are running and how to effectively manage them. Get the highest level of insight into your machines with Niftylink Insights.



Messages

Stay connected.

The Messages center enables focused communication around a particular machine, keeping track of all ongoing communication between Fleet Managers, Service Technicians and Operators. Messaging is instant and even allows the sharing of high-quality pictures and video content, assisting Service Engineers in reporting damage to a machine and in resolving any issues quickly and efficiently, increasing machine uptime.



Niftylink Manager Classic

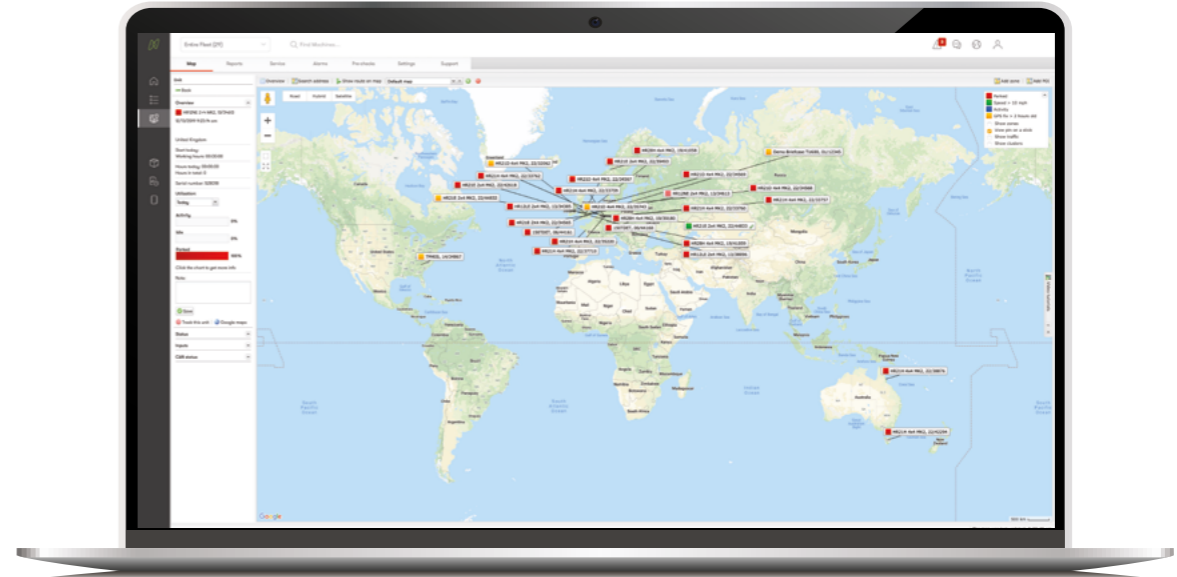
'Classic' is an embedded part of Niftylink Manager that encompasses all features that enable Fleet Managers to set up and manage customers and machines, schedule services and create reports.

Servicing

Machine services can be scheduled in Niftylink Manager Classic, allowing Fleet Managers to use real-time insights provided by Niftylink to schedule the servicing of machines, making the process smarter and more efficient.

Alarms

With the alarms feature, you can closely monitor machine health and safety. Set up alarms for the things that are important for you, for example, to inform you when a machine has arrived on-site or when a machine's battery level falls below a certain percentage. You control what information you want from your machine and get it instantly.

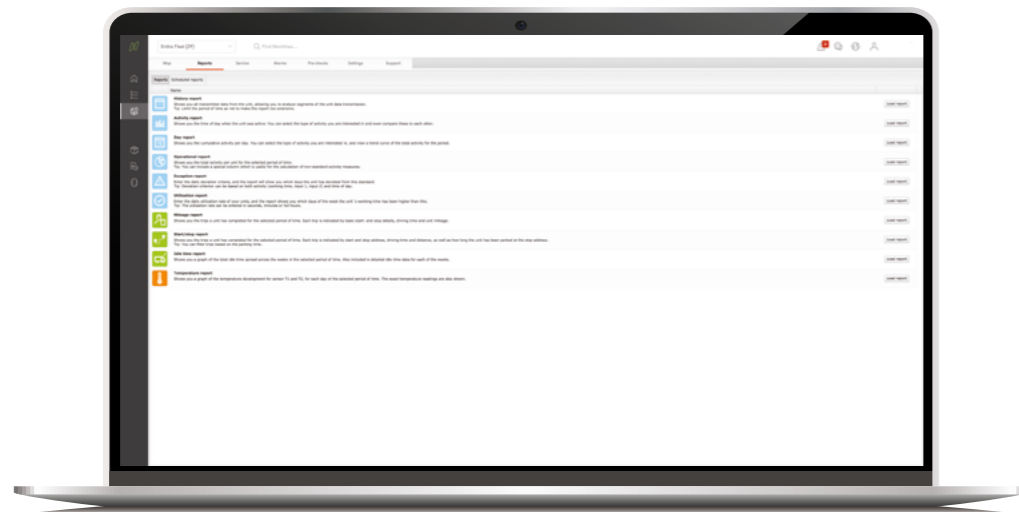
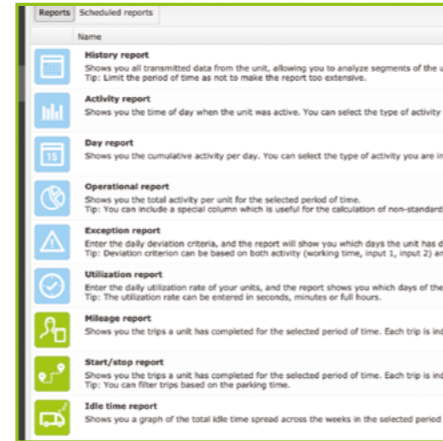


Reporting

Fleet Managers can create reports on the operation, utilization, activity and history of machines. Through streamlining all reports in Niftylink Manager Classic, the process becomes more efficient, combining the ability to manage and report on the fleet in one easy to use platform.

Machine Management

Fleet Managers can set up machines to only work during their agreed hire period. If immediate collection of the machine is not possible, this prevents the possibility of the machine being off-hired. Prolong the life cycle of your machines and prevent costs that arise from unforeseen damage.



Access Control (Niftylink Keypad Optional Extra)

Prioritize safety.

Set up a pin code to manage access. With Niftylink Keypad, Fleet Managers have complete control over who has access to machines in the fleet. Be sure machines are not operated by unauthorized personnel without the proper training, preventing accidents and improving site safety.

Protect valuable assets.

The ability to only allow pre-authorized personnel to operate machines reduces the possibility of theft. Bespoke real-time status monitoring notifies you when a machine has been moved out of a predetermined 'geo-zone' and activates an alarm when this occurs.

Contact us to find out more about Niftylink Keypad.





Niftylink[®]
Manager

Smart. Connected. Efficient.

Contact us now.

Speak to our sales team to discover how Niftylink can maximize the potential, profitability, and efficiency of your fleet.

Call **1-800-NIFTYLIFT (1-800-643-8954)**

Email: usasales@niftylift.com

www.niftylift.com/usa/niftylink

www.niftylinkmanager.com